



Sveriges lantbruksuniversitet  
Swedish University of Agricultural Sciences

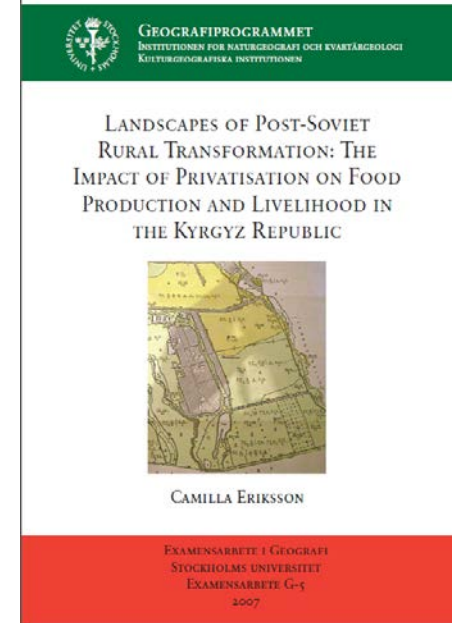
# How should society organise food production?

**Camilla Eriksson, PhD., Researcher**  
SLU, the Swedish University of Agricultural Science  
Division of Rural Development  
[camilla.eriksson@slu.se](mailto:camilla.eriksson@slu.se)

Uppsala University,  
Centre for Gender Research  
[camilla.eriksson@gender.uu.se](mailto:camilla.eriksson@gender.uu.se)

## Research interests:

- Agriculture policy analysis, land reforms, how the state position farmers, moral and/or ideological stands on food and animal production, the role of food in e.g development and security policies, how it changes people's (farmer's) everyday lives, management practices and land use patterns
- Ethnographic methods + discourse analysis
- farmer's perspectives and decision making processes, bonds to land, bonds to animals, family bonds, gender relations
- other policy fields: natural and cultural heritage, wildlife management, food safety — policies that open up or close down opportunities for farmers



### Three ongoing projects:

- **Can we produce food during crises? Vulnerabilities and resilience at farm level in Swedish agriculture (SLU, MSB)**
- **Changing Animal Bodies: Breeding Responses to Environmental, Economic and Social Pressures (UU, Formas)**
- **The prospects for Swedish farming: agrarian change and household strategies (UU, Formas)**

## Example: pig production

- A sow has piglets 2,3 times/year, 2-20 piglets per time
- Yearly production example: 118 sows = 2400 pigs/year
- A lactating sow drinks 20-35 litre of water/24 hrs.
- Fodder consists of grains, produced on-farm (114 ha), and protein fodder, bought from retailers
- Fodder and water cannot be given without electricity



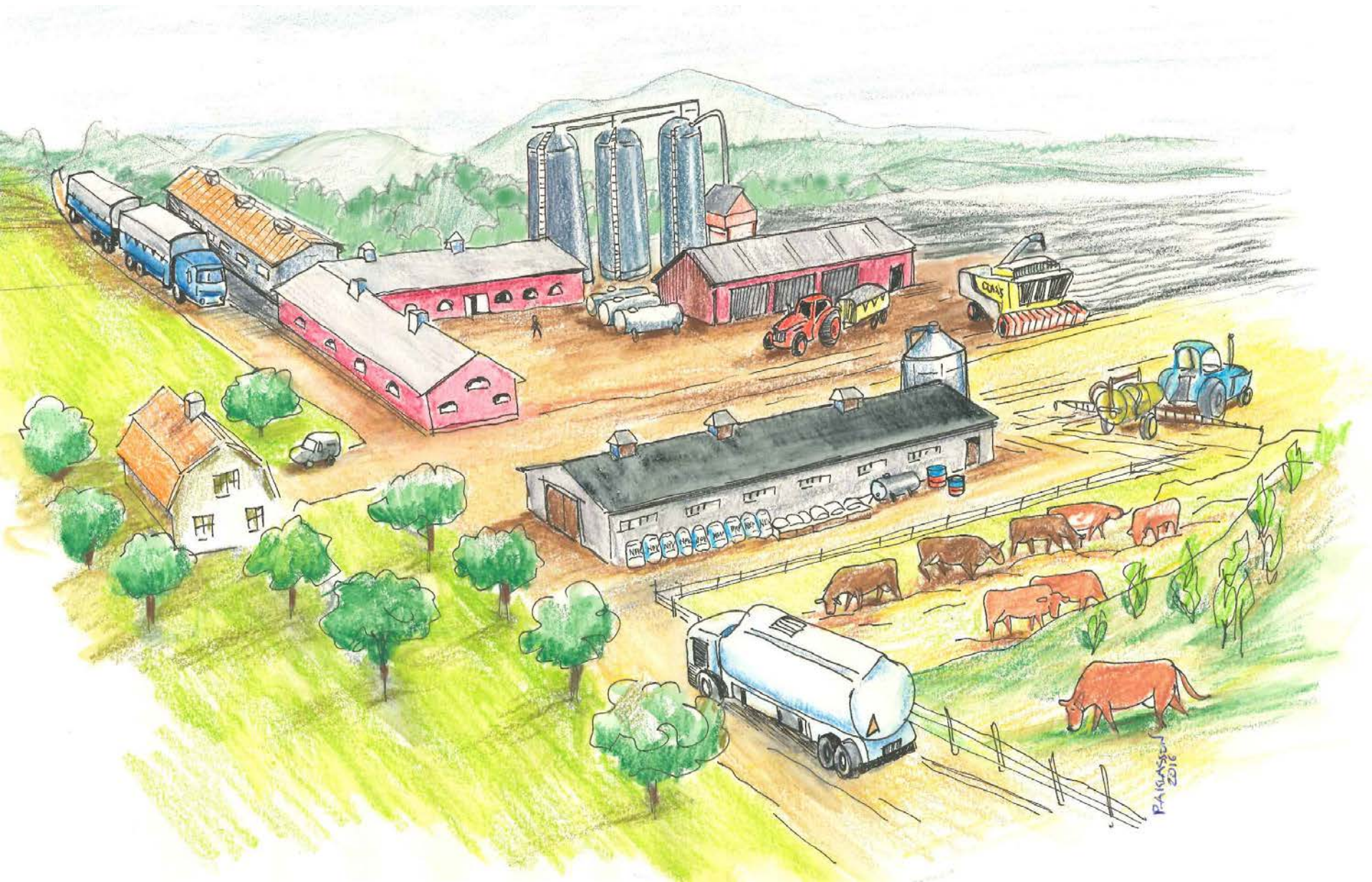
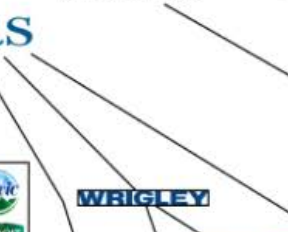
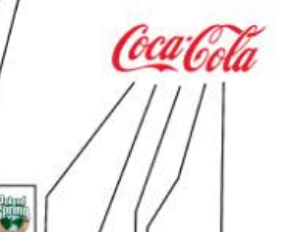
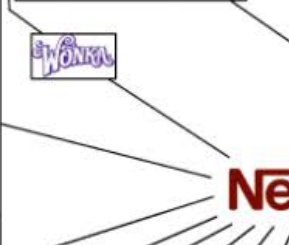


Illustration: Per-Arne Klasson, 2016



Nestle

PEPSICO

GENERAL MILLS

Kellogg's

Associated British Foods  
plc

Mondelez  
International  
(formerly Kraft Foods)

Coca-Cola

Unilever

DANONE

MARS

WRIGLEY

Nestle

PEPSICO

GENERAL MILLS

Kellogg's

Associated British Foods  
plc

Mondelez  
International  
(formerly Kraft Foods)

Coca-Cola

Unilever

DANONE

MARS

WRIGLEY

# The prospects for Swedish farming: agrarian change and household strategies

This project returns to a unique material of 260 interviews with farm households in three different study areas in Sweden, carried out in 1992, to track the changes they have gone through.

We will analyse four key themes:

a) trajectories of agrarian change, b) livelihoods and pluriactivity of farm households, **c) negotiation of gender relations** and d) uncertainties and risks – how farmers relate to the future.



# Changing Animal Bodies: Breeding Responses to Environmental, Economic and Social Pressures

-The project is made up of three cases:

- **Case 1: Chicken economies: (re)producing white meat**

Helena Nordström Källström, SLU & Andrea Petitt, UU

- **Case 2: Rhetorics and aesthetics in traditional cattle breed standards**

Camilla Eriksson, UU & Andrea Petitt, UU

- **Case 3: Breeding robust pollinators: honey bees in changing environmental contexts**

Jacob Bull, UU, Elsa Coimbra, LU & Joel Nord, UU







Nye rutintjuren 6856 Fred, från fäboden till finrummet.



Kallelse till årsmöte, sid 5



## FÖRENINGEN FÖR ÄLDRE SVENSK BOSKAP

bevarar den fjällnära boskapen

### FÖRENINGEN

- Om oss
- Styrelse
- Blå medlem

### BEVARANDET

- Vad är en fjällnära?
- Hotbild
- Avelsplan
- Avel och semin
- Genbank
- Miljöstöd
- Riktpriser
- Annonser

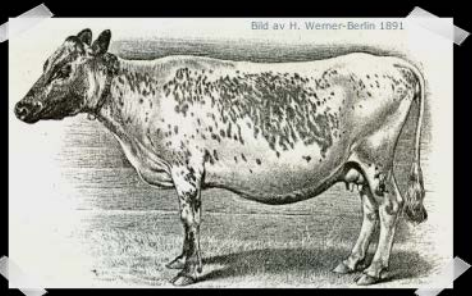
### HUSHÅLLSKON

- Mjölken
- Köttet
- Bete & foder

### FJÄLLNÄRA I BILD

### FÖRENINGEN FÖR ÄLDRE SVENSK BOSKAP BEVARAR DEN FJÄLLNÄRA BOSKAPEN

Vi arbetar för att bevara den fjällnära boskapen som en oförädlad lantras inom en levande genbank.



### FÖRENINGEN ALLMOGEKON



### MÅLSÄTTNING

Att bevara rester av allmogekor (väneko, bohuskulla och ringamälako) som levade genbanker med så stor genetisk variation som möjligt och med de egenskaper som var kännetecknande för djurgruppen när det aktiva bevarandearbetet påbörjades.

